

62

[1957]

Bu

Langeveld Bulb Co. Inc.

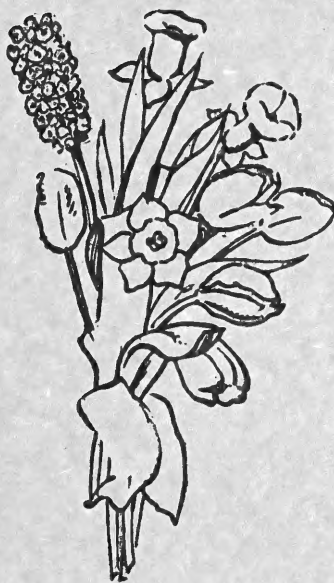
Wholesale Bulbgrowers and Exporters

Park Ridge N.J.

P.O. Box 516

Phone Park Ridge 6-0359

LIBRARY
RECEIVED
★ FEB 14 1957 ★
U. S. Department of Agriculture



Langeveld Bulb Co. Inc.

(Wholesale Bulbgrowers and Exporters)

106 PERRY STREET
Park Ridge N. J.

P. O. Box 516

Phone Park Ridge 6-0359



With Farms at Lisse - Holland

Advertising Material

★

TO STIMULATE YOUR BULB-SALES IN THE FALL,

The office of

The Associated Bulb Growers of Holland

29 Broadway

NEW YORK 6, N.Y.

has advertising material available (most of which is free) to be used in stores to increase your bulbsales. Those, retailing imported Holland Bulbs in the fall, should write to the above address for information.

IMPORTANT DATES

FOR

FLORISTS AND GROWERS

	1957	1958	1959
VALENTINE DAY	Febr. 14th	Febr. 14th	Febr. 14th
EASTER	April 21st	April 6th	March 29th
MOTHER'S DAY	May 12th	May 11th	May 10th

Pictures are available of all varieties marked *

★

For Terms of Sale see page 51

*Hyacinths
lend
a gay aspect
to every
Spring Garden*
☆



How to order Hyacinths

TOP SIZE AND FIRST SIZE

are the largest sizes of Hyacinth-bulbs, carefully selected, producing large flower spikes.

Both sizes are excellent for single pots.

The First size is best for growing on glasses.

SECOND SIZE AND THIRD SIZE:

These sizes we can especially recommend for general purposes.

These bulbs are excellent for growing 3 or more bulbs in pans.

This size is also suitable for gardening purposes.

BEDDING SIZE:

This size is the most popular one for outside planting.

The flowers are not so heavy and will therefore stand the rainy and windy weather better.

MINIATURE HYACINTHS

produce graceful flowers and are therefore very suitable for growing in pots and flats and for cutflower purposes.

Hyacinths



LIST OF VARIETIES

Hyacinths are used for forcing and are also excellent for the garden. The Springgarden is not complete without Hyacinths.



Where planted in beds and borders they always attract attention with their bright, cheerful colors.

PINK

- ANNA MARIE, clear pink, very early
- CROWNPRINCESS MARGARET, pink, large spike
- DELIGHT, light pink, good for early forcing
- GERTRUDE, rosy pink, compact flower, medium early
- *LADY DERBY, fine light pink, large bells, fine shaped bulb
- *MARCONI, rosy pink, good for later forcing
- *PINK PEARL, deep rosy pink, large spike, early. One of the best pink Hyacinths
- *QUEEN OF THE PINKS, lovely bright rosy pink; large spike of fine bells, late forcer. Also good for bedding

RED

- CYCLOPS, carmine red, large bells, medium late
- *JAN BOS, beautiful rich scarlet, very early
- *LA VICTOIRE, brilliant carmine red, large spike, early

WHITE

- ARENTINE ARENDSSEN, pure white, large spike and large bells, very early
- CARNEGIE, pure white, late forcing
- *EDELWEISS, pure white, sturdy broad compact spike, fine early forcer
- *L'INNOCENCE, pure white, broad, loose spike of elegant form, very large well shaped bells, early and excellent for forcing. The most popular of all white Hyacinths
- QUEEN OF THE WHITES, pure white, splendid spike, good for late forcing

YELLOW

- *CITY OF HAARLEM, yellow, large spike, extra fine
- PRINCE HENRY, yellow, early forcer
- YELLOW HAMMER, yellow, large broad spike

LIGHT- AND DARK BLUE

- *BISMARCK, skyblue, large spike, excellent for early forcing
- *DELFT BLUE, bright porcelain blue, compact spike
- DR. STRESEMANN, bright blue, large flower
- *GRAND MAITRE, fine deep porcelain blue
- HINDENBURG, porcelain blue, large bells
- *KING OF THE BLUES, the best dark blue, with splendid, well formed large spike on short stem; late forcer
- *MYOSOTIS, pale blue, long spike. Good forcer
- *OSTARA, fine porcelain blue, early forcer
- PERLE BRILLANTE, fine lavender blue, large spike
- QUEEN OF THE BLUES, fine light blue with beautiful silvery shade, large spike

VIOLET

- LORD BALFOUR, purplish violet

FAIRY HYACINTH

- *BORAH (multiflowered Hyacinth), porcelain blue

Prepared Hyacinths

for early forcing

These Hyacinths are treated in a special way, which makes them well suitable for early forcing, they should be potted directly after arrival. With their early flowers, these Hyacinths offer a welcome material when other Hyacinths and Tulips are not yet in bloom.

Prepared miniature Hyacinths are suitable for early cutflowers.

☆

As the bulbs which are to be prepared, are lifted early, orders for these bulbs must reach us before June 1st.

RED AND PINK

ANNA MARIE

DELIGHT

JAN BOS

LADY DERBY

PINK PEARL

WHITE

ARENTINE ARENSEN

L'INNOCENCE

BLUE

BISMARCK

DELFT BLUE

OSTARA

Single Early Tulips

Besides their value for forcing, early Tulips with their flashing colors always make a splendid striking effect in any garden, whether planted in beds or smaller groups in borders.

p. 1000
\$

- APRICOT YELLOW, buff yellow, slightly tinted red and orange
- BEL AMI, deep rose, early
- BELLONA, pure golden yellow, good for forcing.....
- *BRILLIANT STAR, brilliant scarlet, black center, very early
- BRILLIANT STAR MAXIMA, larger form of Brilliant Star ..
- *COULEUR CARDINAL, brilliant crimson, slightly dewed outside. Grand variety for late forcing and bedding
- CROWN IMPERIAL, mahogany red, edged golden yellow..
- FRED. MOORE, bright orange terracotta, early forcer
- *GENERAL DE WET, orange, one of the most effective varieties for forcing and bedding, sweet scented
- HERMANN SCHLEGEL MAXIMA, sulphur yellow
- *IBIS, splendid deep rose, early
- JOFFRE, yellow sport of Brilliant Star
- *KEIZERSKROON, bright red with broad golden yellow border
- MON TRÉSOR, pure golden yellow, very large flower, early
- OLYMPIADE, golden yellow; good forcer and bedder, strong stem
- PINK BEAUTY, deep rose with white flush outside, very large
- *PRINCE CARNIVAL, red, flamed yellow, sport of Prince of Austria
- *PRINCE OF AUSTRIA, fine orange red, brilliant scarlet inside, very sweet scented, for forcing and bedding
- RISING SUN, golden yellow, large flower
- *SUNBURST, orange-yellow, flamed red, fine for bedding....
- THOMAS EDISON, orange-red, lighter edged
- URSA MINOR, deep golden yellow
- VAN DER NEER, clear deep violet, fine large flower
- VERMILION BRILLANT, brilliant vermilion scarlet
- WHITE HAWK, pure white
- YELLOW PRINCE, yellow, slightly feathered red

- SEPARATE COLORS
- SUPERFINE MIXED, ALL COLORS



GLORIOUS PLANTING OF TULIPS

Double Early Tulips

These Tulips bloom a little later than single early Tulips. Their double flowers have a beauty all their own, which makes them so suitable for pot plants.

They are also excellent for planting in beds or borders.

p. 1000
\$

- BONANZA, carmine-red, edged yellow
- BOULE DE NEIGE (Snowball), large, pure white
- *DANTE, blood red, good forcer
- *ELECTRA, splendid deep carmine
- EL TOREADOR, orange red, terracotta edged
- *GOYA, vivid light orange red, new sport of Murillo
- HOANGHO, pure yellow, strong stem, early
- *MARÉCHAL NIEL, golden yellow, flamed salmon orange ..
- MARQUETTE, red, edged yellow
- *MR. VAN DER HOEF, pure golden yellow, excellent variety
- *MURILLO, white, shading to delicate pink
- MURILLO MAXIMA, sport of Murillo, taller and earlier
- *ORANJE NASSAU, deep orange and red
- PAUL CRAMPEL, geranium-red
- *PEACH BLOSSOM, deep pink. Fine for forcing. The most
popular double pink tulip
- SCARLET CARDINAL, glossy scarlet. Early forcer
- *SCHOONOORD, snow-white
- TEAROSE, soft yellow, slightly shaded apricot
- TITIAN, red with yellow border
- TRIUMPHATOR, very deep pink
- VUURBAAK, scarlet; large flower on strong stem, late
- *WILHELM KORDES, bright orange, flushed red
- WILLEM VAN ORANJE, orange, flushed coppery-red
- *WILLEMSOORD, carmine, edged white

- SEPARATE COLORS
- SUPERFINE MIXED, all colors, for outside planting

Darwin Tulips

„HIGHLIGHTS OF THE GARDEN“

No other Tulips equal the Darwin Tulips in splendor and usefulness for various purposes.

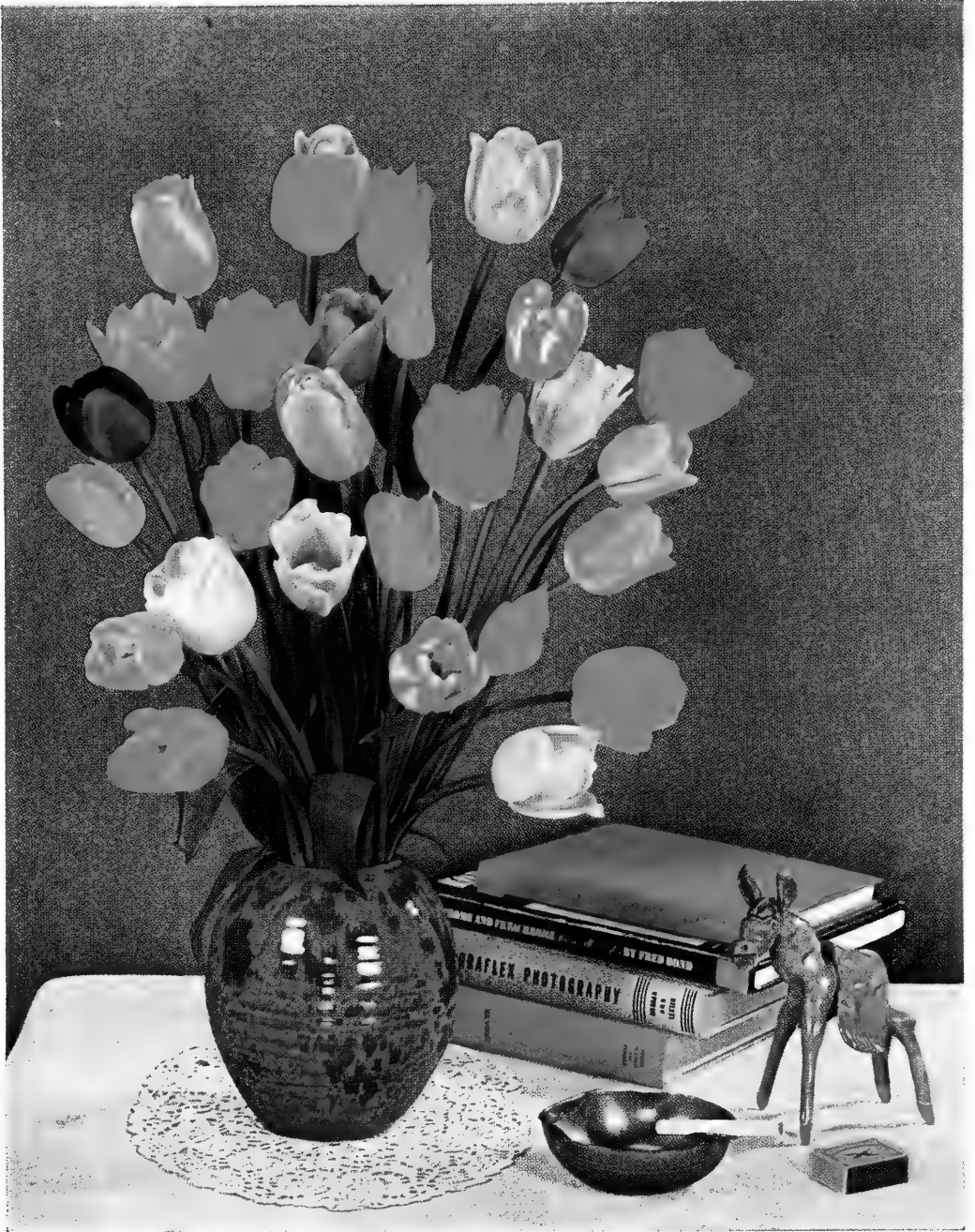
Introduced into Holland some fifty years ago, Darwin Tulips soon found their way into gardens all over the world and were eagerly accepted by the floristrade. Demand increases from year to year. Since their introduction, many beautiful new varieties have been developed and were received with enthusiasm by the public, but some of the first introduced varieties, such as Clara Butt, Farncombe Sanders, La Tulipe Noire, Pride of Haarlem and others still rank high among the popular varieties.

Blooming in May, carried on strong, erect stems, the Darwin Tulips with their stately beauty and gorgeous colors, red, pink, lavender, purple, black, yellow and white are ideal for all garden purposes and excellent for cutflowers. Many varieties can also be successfully forced for cutting and in pots and pans. Some for Valentine Day and others for Easter pots.

When planted under so called „cold glass“ in good soil, and thus coming into bloom protected from bad weather, Darwin Tulips will produce a rich crop of clean strong flowers before the bulbs grown outside are in bloom.

p. 1000
\$

- AFTERGLOW, fine orange rose with distinct orange edge..
- *ALL BRIGHT, fine bright red sport of Bartigon
- *AMERICAN FLAG, bright red, striped and flaked white ..
- *ARISTOCRAT, dark violet rose, edged lighter
- *BARTIGON, clear crimson red, one of the best for late forcing
- BARTIGON MAXIMA, larger flowers than Bartigon
- BASRA, pale lilac, egg-shaped
- BEATOR, deep rose, edged lilac
- *BLEU AIMABLE, rich bluish heliotrope, exquisite shape
- *CAMPFIRE, deep vermilion scarlet, sport of Bartigon
- *CHARLES NEEDHAM, brilliant scarlet
- *CITY OF HAARLEM, brilliant scarlet, large flower of beautiful
shape
- *CLARA BUTT, clear self-colored salmon rosy pink, very
popular
- COPLAND'S PURPLE, a purple sport of Wm. Copland
- COPLAND'S RIVAL, deeper colored sport of Rose Copland
- *CORDELL HULL, red, striped rosy, sport of Bartigon
- CUM LAUDE, dark campanulaviolet
- *DEMETER, purple, good for early forcing



TULIPS ARE IDEAL FOR CUTFLOWERS

- DESIRÉE, vermilion red
- *DORRIE OVERALL, dark petunia violet, edged mauve
- DUKE OF WELLINGTON, pure white
- EARLY BARTIGON, an early flowering sport of Bartigon ..
- *ECLIPSE, glistening blood red, strong stem
- *FARNCOMBE SANDERS, fiery rose scarlet. Extra for bedding
- GIANT, purplish violet, on tall stem
- GLACIER (syn. Wildlust), ivory-white, large, white base and
anthers
- *GOLDEN AGE, deep golden yellow, shaded orange, excel-
lent for bedding
- GOOD HOPE, cerise pink
- GREUZE, violet purple
- *INSURPASSABLE, lilac, large flower
- *LA TULIPE NOIRE (THE BLACK TULIP), flower of a unique
color
- MAD. BUTTERFLY, bluish violet, paler edged, tall flower ..
- MAGIC FIRE (FEUERZAUBER), deep red sport of Bartigon..
- *MAMASA, bright buttercup yellow
- *MARGAUX, deep wine red, large flower
- *MONTGOMERY, white with carmine red edge, Bartigon sport
- MOST MILES, current red, base yellow
- MR. VAN ZIJL, rose pink with lighter edge
- NARDI, carmine red
- NEW ORLEANS, burgundy red
- *NIPHETOS, ivory yellow, large flower of good substance ..
- PALEMBANG, yellow, edged buttercup yellow
- PANDION, purple, edged white
- PAUL RICHTER, geranium red
- *PHILIP SNOWDEN, light carmine rose, sport of Bartigon
- PHILIPPE DE COMINES, maroon black
- PIETER DE HOOGH, carmine red, edged salmon rose
- *PRIDE OF HAARLEM, cerise scarlet, large flower of superb
form, a stately plant for borders and amongst shrubs
- *PRIDE OF ZWANENBURG, pure salmon pink, large flower
- *PRINCESS ELIZABETH, vivid rosy pink, fine forcing variety
and splendid for outdoors
- PRINCESS ELIZABETH MAXIMA, large flowering sport of
Princess Elizabeth
- *PRUNUS, salmon pink, sport of Bartigon
- QUEEN OF BARTIGONS, pure salmon pink
- QUEEN OF NIGHT, deep velvet maroon
- RED MASTER, deep red, sport of Pride of Haarlem

- *RED PITT, a bright red sport of Wm. Pitt, splendid forcing var.
- ROSA VAN LIMA, lilac rose, edged salmon red
- ROSE COPLAND, rose lilac, sport of Wm. Copland
- *SCARLET LEADER, brilliant scarlet
- SCARLET SENSATION, large flower, good forcing variety..
- SCARLETT O'HARA, geranium-red
- SCOTCH LASSIE, deep lavender
- SPRING SONG, bright red, flushed salmon
- SUNKIST, deep golden yellow
- SWEET HARMONY, lemon-yellow, edged ivory-white.....
- *THE BISHOP, bright violet blue, large flower. Extra variety
- THE PEACH, bright pink
- UTOPIA, cardinal red
- VICTOIRE D'OLIVEIRA, deep red, good forcer
- WHITE GIANT, pure white, large flower on tall stem
- WHITE ROCK, creamy white, yellow anthers
- *WILLIAM PITT, very fine cerise red with a darker shade on
the outer petals, distinct color, splendid forcer
- Wm. COPLAND, lovely lilac, early forcer
- YELLOW GIANT, yellow on tall stem
- ZINA, deep buttercup yellow, very late
- *ZWANENBURG, pure white, large flower
- SEPARATE COLORS
- SPLENDID MIXTURE, ALL COLORS

Darwin Hybrid Tulips

A new race of tulips, the results of crossings between Darwin Tulips and Fosteriana varieties. They have enormous flowers on strong stems and vivid colors.

- APELDOORN, orange scarlet, black base, edged yellow ..
- DARDANELLES, cherry red, large flower
- DOVER, fiery poppy red, very large flower
- GENERAL EISENHOWER, orange red
- GUDOSHNIK, spotted red
- HOLLAND'S GLORIE, orange scarlet, black base
- LEFEBER'S FAVORITE, glowing scarlet, yellow base
- OXFORD, red, flushed purple red
- ROOSEVELT, clear orange-red, extra large wellformed
flower

Single Late or Cottage Tulips

The older varieties of this class, were found in Cottage Gardens in England. Many fine, new varieties have been added to this class by hybridizing.

Cottage Tulips have various shaped flowers and habits and are splendid for gardening purposes and cutflowers.

Some varieties are also extensively used for forcing.

p. 1000
\$

- *ADVANCE, fiery red, very large flower
- *ALBINO, pure white, large flower, extra for forcing
- ARGO, yellow with red spots, changing to reddish orange
- ARTIST, inside salmon rose and green, outside purple and salmon rose
- *BELLE JAUNE, rich deep yellow
- *CARRARA, pure white; good for forcing and bedding
- CHAPPAQUA, soft violet-rose
- *DIDO, orange rose, margined bright orange yellow
- FLAMING BEAUTY (FIRESIDE), yellow, striped and flushed red
- *GOLDEN HARVEST, deep lemon yellow, large flower, good for forcing, very popular variety
- *GOLDEN MEASURE, deep canary yellow
- GRENADIER, bright orange red
- *G. W. LEAK, brilliant geranium red
- INGLESCOMBE YELLOW, canary yellow, fine bedder
- LINCOLNSHIRE, geranium red sport of Inglescombe Yellow
- *MARJORIE BOWEN, salmon orange-rose, exquisite variety
- *MARSHAL HAIG, bright scarlet with yellow base, strong stem
- *MOTHER'S DAY (LEMON QUEEN), lemon yellow
- *MRS. JOHN T. SCHEEPERS, pure yellow, large oval flowers
- *MRS. MOON, pure yellow, elegant shape
- *NORTHERN QUEEN, pure pink and white, large flower
- *OSSI OSWALDA, creamy white, flushed pink, passing into deep rose
- *PRINCESS MARGARET ROSE, yellow, edged and flushed orange red, sport of Inglescombe Yellow
- *ROSY WINGS, radiant apricot-pink, exquisite flower
- SMILING ANN, white, edged pink

- *SMILING QUEEN, beautiful satiny pink, with silvery edge.
 Excellent for outdoors
- THEMIS, pure white, good for forcing
- *WALLSTREET, golden yellow
- *WHITE CITY (MOUNT EREBUS), pure white, creamy anthers
 YELLOW EMPEROR, deep golden yellow, large eggshaped
 flower on tall strong stem
- ZOMERSCHOON, salmon pink, flaked creamy white
- FINE MIXTURE

Lily Flowering Tulips

These Tulips belong to the Cottage Tulip family and bloom at the same time. Their distinct shape, more or less resembling Lilies made it desirable to group them under a separate head. They are splendid for groups in borders and are very artistic cutflowers.

- ALADDIN, scarlet, edged yellow
- ALASKA, pure yellow, sweet scented
- BEVERLEY, bright orange red
- *CAPTAIN FRYATT, garnet red, violet blue center
- *CHINA PINK, pink, white base
- DYANITO, bright red
- *GISELA, soft pink
- GOLDEN DUCHESS, golden yellow
- LILAC TIME, intense violet purple
- MARCELLINA, deep rosy pink, pure white base
- MARIETTE, deep satin rose
- MAYTIME, reddish violet, creamy white edge
- PAINTED LILY, buttercup yellow, edged scarlet
- PICOTEE, white, edged pink, passing into rose
- QUEEN OF SHEBA, glowing brownish red, edged orange ..
- SEBASTIAN, buttercup yellow
- STANISLAUS, orange red, yellow center
- *WHITE DUCHESS, white
- WHITE TRIUMPHATOR, pure white

Breeder Tulips

Breeder Tulips are one of the oldest classes of Tulips. They bloom in May with the Darwin Tulips, some varieties even a little later.

Most varieties have tall stems.

With their dark colors and shades in bronze, mahogany, orange, purple, they make a striking „exotic“ contrast with the bright colors of the Darwins.

p. 1000
\$

- ADMIRAL TROMP, coppery bronze, flushed carmine and edged orange
- ALICE KEITH, orange, tinted reddish purple
- BACCHUS, dark plum color, immense large flower
- CHERBOURG, golden yellow, outside bronze, large flower ..
- CHEYENNE, carmine, edged orange red
- *DILLENBURG, glowing salmon orange, very popular
- *GEORGES GRAPPE, large, lavender mauve
- *INDIAN CHIEF (MEYERBEER), coppery red, large flower of exquisite form, long stem
- JESSY, dull violet bronze, edged yellow
- J. J. BOUMAN, tomato-red, flushed claret, edged yellow
- *LOUIS XIV, dark purple flushed with bronze, edging to golden brown, inside purple, a flower of great substance
- *ORANGE DELIGHT, clear bronze
- *PANORAMA, reddish mahogany, good for forcing
- PAPAGO, poppy-red, yellow base
- PONTIAC, mahogany red
- *PRESIDENT HOOVER, brilliant orange red
- PRINCE OF ORANGE (ORANGE BEAUTY), deep orange red, golden orange margin
- SAGINAW, deep magenta red, orange edge
- *TANTALUS, yellowish, shaded violet
- WINNETOU, orange red, edged bronzy-orange.....
- MIXED VARIETIES

Triumph Tulips

These Tulips result from crossings between Darwin- and later flowering varieties of the early Tulips. Their flowering time is just between these two classes.

Most Triumph Tulips have large flowers and strong stems and are of medium height which makes them very useful for beds.

Some varieties are well known for forcing and the short stemmed kinds, such as Denbola are fine for Easter pots.

p. 1000
\$

- ADORNO, salmon orange, edged bronze yellow
- *ALBERIO, cerise scarlet, yellowish edge, good for pots
- ARGUNO, bordeaux-red, edged white
- *AUREOLA, bright red, edged golden yellow
- *AVIATEUR, deep red, bordered creamy white
- BALMORAL, glowing dark carmine red
- *BANDOENG, deep mahogany red with golden edge
- *BRUNO WALTER, deep orange yellow, sweet scented
- *CRATER, deep carmine red. Excellent for pots
- *DENBOLA, cerise-red, bordered creamy white
- *EDITH EDDY, soft cerise, white edge
- ELISABETH EVERS, beautiful pink, large flower
- *ELMUS, cherry red with white border, splendid for cutting..
- EMMY PEECK, deep lilac rose
- *GLORY OF NOORDWIJK, brilliant rosy pink
- HINDENBURG, garnet red, edged yellow.....
- KANSAS, snow-white, lemon yellow center
- *KORNEFOROS, brilliant bright red, extra variety, best forcer
- LUSTIGE WITWE (MERRY WIDOW), violet red, edged white
- MADAME CURIE, bright red, early
- MAKASSAR, dark canary yellow
- MR. KERBERT, bright rose, white base, large. Splendid for pots
- MR. ZIMMERMAN, very fine rose with white border
- NIVEA, pure white, large flower
- NOVA, old rose, flushed carmine and apricot
- ORANGE KORNEFOROS, orange red
- OVERDALE, red, flushed purple
- *PARIS, orange-red, edged yellow
- PAX, pure white
- PICCADILLY, carmine red, edged pure white
- PINK GLOW, satiny rose
- PRELUDIUM, rose, white base
- *PRINCESS BEATRIX, Alberio sport, broad orange margin ..
- PROMINENCE, dark red
- *RED GIANT, fine scarlet pan tulip for Easter forcing
- RED MATADOR, carmine flushed scarlet, edged vermilion ..
- REFORMA, sulphury yellow, edged golden yellow

- *RHINELAND, yellow and red, distinct bedder
- *ROLAND, bright scarlet, edged ivory
- ROSE BEAUTY, deep pink changing to cherry red
- ROSE KORNEFOROS, rose
- *TELESCOPIUM, violet rose, flower of great substance on tall stem, early and easy forcer
- WINTERGOLD, clear yellow
- WISCONSIN, deep rose, fine attractive color, fine for pots
- MIXED VARIETIES

Mendel Tulips

Mendel Tulips are hybrids from crossings between early Tulips and Darwin Tulips and are mostly used for forcing for cut-flowers. Some are real early forcers.

- ATHLEET, a pure white sport of Weber
- BRIGHTLING, rosy carmine, large flower
- DREAMING MAID, violet, edged white
- EARLY QUEEN, deep satin-rose, very early
- FRIDJOF NANSEN, carmine red; medium early
- FUGA, blood red
- *HER GRACE, rosy pink, good for pans
- IMPERATOR, wine-red, very large flower
- *JOHN GAY, orange, eggshaped
- *KRELAGE'S TRIUMPH, deep red, strong flower; early forcer
- MIRJORAN, carmine red, broadly edged creamy white
- OLAF, scarlet, good for pans, early
- OLGA, violet red, edged white
- *ORANGE WONDER, bronzy-orange
- PINK TROPHY, pink flushed rose
- PIQUANTE, carmine, edged white, early forcer
- REMAGEN, light rose
- SCARLET ADMIRAL, crimson, medium early, good for pots
- SCARLET WONDER, vermilion red, very early
- SHACKLETON, pure white
- SULPHUR TRIUMPH, primrose yellow
- TOPSCORE, geranium-lake-red, yellow base
- *VAN DER EERDEN, lively red, early forcer, extra variety ..
- *WEBER, white, bordered pink, tall stem, medium early
- *WHITE SAIL, white, early
- WHITE VIRGIN, pure white
- YELLOW GEM, lemon yellow
- COLLECTION IN VARIETIES OUR CHOICE

Parrot Tulips

The ever increasing demand for these Tulips clearly shows the growing appreciation for the remarkable beauty of the Parrot Tulips with their elegant lacinated flowers.

They bloom in May.

On account of their large, heavy flowers Parrot Tulips are not recommended for planting in beds. In groups and in borders, they are very effective. Excellent for cutflowers. Placed in shallow bowls or dishes when cut, they make a very artistic effect on tables.

p. 1000
\$

- *ADMIRAL DOORMAN, cherry red, edged golden-yellow ..
- *BLACK PARROT, purplish black
- *BLUE PARROT, rich bluish heliotrope
- DISCOVERY, sport of Princess Elizabeth, pink
- *FANTASY, lovely soft rose with green streaks, inside salmon
rosy, flowers are carried on erect stems
- *FIREBIRD, fiery red, sport of Fantasy
- GADELAN, violet and mauve, shaded purple
- *ORANGE FAVOURITE, bright orange and green
- *ORANGE PARROT, deep orange, sport of Orange Beauty..
- PARROT WONDER, cherry red
- *PIERSON (MISS KAY), dark red
- PITT'S PARROT, cochineal red
- *RED CHAMPION, bright crimson, shaded rosy-red
- *SUNSHINE, deep golden yellow, perfect parrot shape
- *TEXAS GOLD, deep yellow, sport of Inglescombe Yellow ..
- *THÉRÈSE, fiery rose-scarlet, large flower
- VIOLET QUEEN, beautiful pearl blue, strong stem

Double Late or Peony Flowering Tulips

Like their name indicates, the full double flowers resemble Peony flowers.

They are splendid in borders and fine for cutting but not generally recommended for forcing.

p. 1000
\$

- CLARA CARDER, tyrian purple, white base
- COXA, orange red, narrow margin of pale yellow
- *EROS, old rose, splendid double flower
- LILAC PERFECTION, lilac
- *LIVINGSTONE, bright red
- MAY WONDER, clear rose, somewhat lighter towards the base. Very strong large flower on strong stem
- *MOUNT TACOMA, pure white, large flower.....
- *NIZZA, yellow striped and feathered red
- ORANGE TRIUMPH, orange-red, flushed brown and narrow yellow edge
- PALETTE, undertone of red passing to lilac, bordered yellow passing to light yellow. Immense flower on strong stem. Most unusual color
- ROCKET, cherry red, sport of Eros.....
- ROYALTY, dark brick red with small creamy edge. Very double large flower on strong stem
- ROYAL YELLOW, golden yellow
- SNOW PRINCE, creamy white, large full double flower
- *SYMPHONIA, cherry red, double sport of Darwin tulip Pride of Haarlem
- *UNCLE TOM, dark glittering red, extra double
- YOSEMITE, lilac rose, lighter towards base, large semi-double flower, tall stem. Good for forcing in late March
- COLLECTION OF BEST NAMED VARIETIES, our choice ..

Tulipa Species (Botanical tulips)

The real gems for the Rock Garden are found in this class. The very early flowering Kaufmanniana varieties followed by the striking, later flowering, Fosteriana types, and the remarkable Praestans Fusilier, are just a few catches out of this rich varied class.

p. 1000
\$

- ACUMINATA (CORNUTA, STENOPETALA), red and yellow;
very long pointed flower
- CHRYSANTHA, rosy-red outside, light-yellow interior
- CLUSIANA, outer petals cherry-red, inner petals white
- *DASYSTEMON (TARDA), canary-yellow and white, bunch-
flowering
- *EICHLERI, fine vermilion orange
- *FOSTERIANA CANTATA, vermilion red, foliage shiny green
- FOSTERIANA FLAMING YOUTH, vermilion red, shiny green
leaves
- FOSTERIANA GALATA, orange scarlet, yellow base
- *FOSTERIANA PRINCEPS, orange scarlet, very large
- *FOSTERIANA RED EMPEROR (Mme. LEFEBER), dazzling ver-
milion red
- *KAUFMANNIANA, The waterlily tulip, creamy yellow out-
side, shaded soft red, inside deep yellow
- " CÉSAR FRANCK, deep yellow, outside red with
 yellow edge
- " ELLIOTT, pure white, outside bright rosy red ..
- " GAIETY, white, outside red
- * " JOHANN STRAUSS, white, outside blotched red
- " ORIENTAL BEAUTY, vermilion-red, base brown-
 ish-black, variegated foliage
- " PRIMROSE, primrose yellow, yellow center ..
- * " SHAKESPEARE, a mixture of salmon shades ..
- * " STRESA, red, edged yellow
- * " THE FIRST, carmine, edged white
- " VIVALDI, yellow, red spotted, inside cream with
 red ring
- MARJOLETTI, lemon yellow, rose base
- PEACOCK MIXTURE (Kaufmanniana & Greigii), very attrac-
tive for its different colors and variegated foliage
- PERSICA, dark yellow, very late
- PRAESTANS, lively orange scarlet, several flowers on a stem
- *PRAESTANS FUSILIER, vermilion-orange, bunchflowering..
- SYLVESTRIS (FLORENTINA ODORATA), yellow, fragrant ..
- TURKESTANICA, white, orange yellow center, bunch-
flowering

*Daffodils
are
outstanding
in the
spring-garden*



Narcissi (Daffodils)

The Spring flower „par excellence“. No other flower depicts so well the spirit of Spring.

Very popular for gardening, splendid for cutting, and forced in large quantities, the Daffodils have an important place in the world of bulbs.

For wild gardening, planting in woodlands, no flower is so popular as the Daffodil.

YELLOW TRUMPETS

- COVENT GARDEN, uniform yellow, good for pots
- *FLOWER CARPET, deep golden yellow
- GODOLPHIN, uniform soft yellow
- *GOLDEN HARVEST, a giant Trumpet. Uniform golden yellow.
Very early
- KING ALBERT, deep golden yellow

p. 1000

£

- *KING ALFRED, the well known leading Trumpet Daffodil.
Uniform clear rich golden yellow; great substance. Excellent for forcing as well as for the garden.
- " " Double Nosed Bulbs I
- " " Double Nosed Bulbs II.....
- *MAGNIFICENCE, deep golden yellow trumpet. Good sized flower on strong stem. One of the earliest
- *REMBRANDT, uniform deep golden yellow perianth and trumpet, flower of fine proportions and shape. Early, highly recommended. Good for pots
- *UNSURPASSABLE, very large, golden yellow, early
- WILLIAM THE SILENT, enormous golden yellow trumpet ..
- WRESTLER, perianth creamy yellow, large deep yellow trumpet of fine shape. Very free flowering

BICOLOR TRUMPETS

- HENRY DETERDING, creamy white perianth, yellow trumpet
- MAGNET, white perianth, yellow trumpet
- *MUSIC HALL, white perianth, yellow trumpet, good forcer
- PRESIDENT LEBRUN, perianth white, trumpet lemon yellow passing to creamy white
- *QUEEN OF BICOLORS, perianth white, trumpet canary yellow, large flowers, early
- *SPRING GLORY, white perianth, large yellow trumpet

WHITE TRUMPETS

- *BEERSHEBA, beautiful pure white variety, good for pots ..
- IMPERATOR, perianth ivory white; creamy white trumpet,
Late forcer
- *MOUNT HOOD, pure ivory white perianth, creamy white trumpet. Very large
- *MRS. E. H. KRELAGE, trumpet creamy changing to pure white. Medium early

LARGE CUPPED NARCISSI

- AEROLITE, primrose yellow perianth, bright yellow trumpet
- *ARANJUEZ, clear yellow perianth, expanded crown, deep yellow edged orange red

- CALIFORNIA, fine bright yellow
- *CARBINEER, broad flat yellow perianth large cup, deep orange red. Fine variety of perfect shape
- *CARLTON (NIMROD), a giant Incomparabilis. Uniform soft yellow. Large cup, beautifully shaped. Early
- *CLAMOR, perianth white, cup yellow, orange red edge, good for pots
- *DICK WELLBAND, pure white perianth, bright orange red cup
- *FLOWER RECORD, white perianth, deep yellow cup edged orange
- *FORTUNE, broad flat overlapping clear yellow perianth of solid texture; very large, glowing orange crown. Very early and free flowering variety of lasting qualities. Extra
- *HELIOS, yellow perianth, large deep yellow cup
- JOHN EVELYN, large overlapping ivory white perianth, large flat apricot crown, heavily frilled. A beautiful variety
- MERCATO, white perianth, yellow crown with orange border
- *MONIQUE, perianth white, cup golden yellow
- *MRS. R. O. BACKHOUSE, ivory white perianth, graceful apricot pink trumpet with deeply fringed edge
- *SCARLET ELEGANCE, perianth deep yellow, cup deep orange red, scarlet edge, outstanding variety
- *SELMA LAGERLÖF, large pure white perianth red crown edged yellow
- *SEMPRE AVANTI, creamy white perianth, large bright orange cup, good for pots. Excellent variety
- *SOLARIO, perianth pure white, large canary yellow cup
- *TUNIS, broad white overlapping perianth, large cup, soft primrose, shaded gold. Extra for show and garden. Early

SMALL CUPPED NARCISSI

- *EDWARD BUXTON, light yellow perianth, deep orange cup
- FIRETAIL, creamy white perianth deep carmine scarlet cup
- *LA RIANTE, perianth pure white, cup deep red, medium early
- *MRS. BARCLAY, creamy white perianth with large overlapping petals, large flat yellow cup, with scarlet edge..
- SNOWPRINCESS, pure white perianth, yellow cup, red edge
- *VERGER, pure white perianth, deep red cup, medium early

POETICUS

- *ACTAEA, large pure white perianth of perfect shape; brilliant scarlet eye. The tallest and finest Poeticus. Medium early

POETAZ

- *CHEERFULNESS (the double Poetaz Elvira), white perianth with full double center of white and yellow. Medium early
- *CRAGFORD, white perianth, orange crown. Excellent for very early forcing
- EARLY PERFECTION, creamy white perianth with lemon yellow cup
- *GERANIUM, round flat pure white perianth, deep orange red cup. Late. One of the best in this class. Strong stem, 6 to 8 flowers on a stem
- LA FIANCEE, perianth white, light orange cup
- *LAURENS KOSTER, well known forcing variety. Early and free flowering. White perianth; deep yellow cup
- L'INNOCENCE, pure white perianth, cup canary yellow. Large and one of the best whites. Early and good for forcing
- *SCARLET GEM, primrose yellow perianth, cup deep orange. Very striking and attractive
- *ST. AGNES, perianth pure white, cup orange red. Medium early
- *YELLOW CHEERFULNESS, soft yellow

DOUBLE DAFFODILS

- ALBUS PLENUS ODORATUS, pure white, very late
- *INGLESCOMBE, uniform pale yellow. Fine formed flower of good substance. Medium early
- INSULINDE, white with orange red center
- IRENE COPLAND, creamy white
- *MARY COPELAND, outer petals pure creamy white, inner petals lemon yellow and brilliant orange. Extra for the garden
- *TEXAS, pale yellow with orange red petals through the center. Early
- TWINK, semidouble, primrose with inner petals of light orange. Very attractive. Tall strong stem. Early
- *VAN SION (TELAMONIUS PLENUS), yellow trumpet and petals, large flower on strong erect stem, fine for pots ..

JONQUILLA AND CAMPERNELLI

- CAMPERNELLI ODORUS REGULOSUS SINGLE, golden yellow flowers, two to four to a stem. Fragrant
- CAMPERNELLI ODORUS REGULOSUS DOUBLE, heads of fragrant elegant double golden yellow flowers on tall stem
- CAMPERNELLI ORANGE QUEEN, rich deep orange yellow flowers, two or three to a stem. Free flowering, very striking
- JONQUILLA SINGLE, sweet scented, deep yellow, with rush like foliage. Fragrant
- *TREVITHIAN, pale lemon yellow, clear yellow cup

The Camperneli Narcissi are fine for planting in masses in beds or borders for cutflowers.

VARIOUS NARCISSI (for rock-gardens)

- BULBOCODIUM (YELLOW HOOP PETTICOAT), rich golden yellow
- BULBOCODIUM CITRINUS, sulphur yellow
- CANALICULATUS, white, yellow cup
- CYCLAMINEUS, clear yellow, reflexed petals
- " FEBRUARY GOLD, yellow perianth, trumpet golden orange
- TRIANDRUS ALBUS (ANGEL'S TEARS), silvery white, two and more drooping flowers on a stem
- TRIANDRUS SILVER CHIMES, very charming Triandrus hybrid, four to six flowers on a stem, nodding and very graceful. Pure white perianth, pale primrose cup
- *TRIANDRUS THALIA, larger than Albus, pure white, splendid for rockgardens and also as cutflower
- W. P. MILNER, sulphury white, dwarf. Dainty for the rock-garden. Free flowering

PAPERWHITE NARCISSI



Crocus



Crocus being among the first flowers to announce the arrival of Spring are welcome in any garden and are appreciated by every one as a sign that the dark cold winter time is coming to an end and spring has arrived. Splendid also in Rock gardens. Some varieties are also good for light forcing.

BLUE AND PURPLE

- EARLY PERFECTION, dark lilac, very early
- ENCHANTRESS, soft pale blue
- GRAND MAITRE, dark blue
- NEGROBOY, darkest purple
- *PURPUREA GRANDIFLORA, purple, extra
- QUEEN OF THE BLUES, porcelain blue, very large flower
- *REMEMBRANCE, uniform blue, one of the earliest and largest
- THE BISHOP, dark purple blue, late

STRIPED

- KING OF THE STRIPED, white, striped lilac
- PALLAS, striped soft lilac on white ground
- PICKWICK, purple stripes on white base
- SIR WALTER SCOTT, white, striped purple
- *STRIPED BEAUTY, blue, striped white

p. 1000	p. 1000
Topsize	First size
\$	\$

WHITE

- JEANNE D'ARC, large white flowers
- KATHLEEN PARLOW, pure white, very large, early
- MONT BLANC, pure white
- *SNOWSTORM, pure white, very large flowers

YELLOW

- *YELLOW MAMMOUTH
- COLLECTION OF SEPARATE COLORS
- *MIXED COLORS

Crocus Species

SPRING FLOWERING

- ANCYRENSIS (GOLDEN BUNCH), orange yellow
- BALANSAE, deep orange
- CHRYSANTHUS DOROTHY, white
- * " E. P. BOWLES, yellow, outside purple
- * " SNOW BUNTING, pure white, feathered
 purple
- CLOTH OF GOLD (SUSIANUS), golden yellow, feathered
 brown
- CLOTH OF SILVER (VERSICOLOR), silvery white, striped
 lilac
- ETRUSCUS, mauve
- " ZWANENBURG VARIETY, mauve
- SIEBERI, soft blue with orange stigma, a nice species
- * " VIOLET QUEEN, violet
- TOMASINIANUS, pale lavender
- * " WHITEWELL PURPLE, purple
- *VERNUS VANGUARD, silver greyish lilac, early

FALL FLOWERING

These varieties flower in dormant state like Colchicums in late August—early September.

Orders for these kinds must reach us in June, as these bulbs are shipped long before other bulbs are ready for shipment.

- ASTURICUS ATROPURPUREUS, purple
- SATIVUS (SAFFRON CROCUS), purplish blue
- SPECIOSUS, deep blue, inside purple violet
- ZONATUS, soft lilac, yellow throat

IRIS

The name „Poor men’s Orchids” indicates the popularity of the Iris.

Dutch Iris are a great improvement over the old Spanish Iris, they bloom two weeks earlier and have large flowers with beautiful colors.

Several varieties are excellent for forcing and all are fine also in the garden and are ideal cutflowers.

DUTCH IRIS

Ready September—October

p. 1000
\$

- BLUE TRIUMPHATOR, clear blue, early
- GOLDEN EMPEROR, deep golden yellow
- *GOLDEN HARVEST, deep golden yellow, extra
- *H. C. VAN VLIET, dark blue, large flower, early forcer.
Highly recommended
- *IMPERATOR, FILIFOLIA, dark blue, large flower, late forcing
- JEANNE D’ARC, creamy white, large flower
- *LEMON QUEEN, light sulphury yellow
- PRINCESS IRENE, standards ivory white, falls glowing
orange, extra
- *PROFESSOR BLAAUW, deep gentian blue
- *WEDGWOOD, pale blue, very early forcer
- *WHITE EXCELSIOR, pure white, narrow yellow blotch, large,
late forcing
- *WHITE PERFECTION, pure white, large flower
- WHITE SUPERIOR, pure white, large flower, extra
- *YELLOW QUEEN, golden yellow, extra for late forcing

- IN NAMED VARIETIES, OUR SELECTION
- BEAUTIFUL MIXTURE

SPANISH IRIS

Ready September—October

- COLLECTION OF NAMED VARIETIES
- VERY FINE MIXED



BULBS

for

Rockgardens

*Planted in gardens
or Rockeries,*

Muscari

*are
very attractive.*

A well arranged rockgarden is a source of real enjoyment to every amateur gardener.

When only suitable perennial or annual plants are used, rockgardens do not reach their prime until summer.

If bulbs are used, the rockgarden will be real attractive already in early Spring, long before the other plants flower.

Deep, well drained pockets of soil are required in which the bulbs are to be planted, this is very essential and will substantially add to the success of the rockgarden.

The following kinds will be found of special merit: Tulip species: Chrysantha, Eichleri, Fosteriana Red Emperor, Kaufmanniana varieties, Praestans Fusilier, further: Miscellaneous Bulbs such as Crocus, **Muscari** (Grape Hyacinths), Eranthis (Winter Aconite), Galanthus (Snowdrops), Chionodoxa (Glory of the Snow), Fritillaria meleagris (Guinea Henflower), Scilla sibirica and also the later flowering Scilla campanulata varieties (Woodland-Hyacinths).

Very attractive and useful for Rockgardens, are also the dainty miniature Daffodils listed under „Various Narcissi“.

Further: Anemone, Allium Moly, Erythronium, Iris reticulata, Tritoleia.

*You can make an extra profit by also selling
Bulbs for Rockgardens*

Miscellaneous Bulbs and Roots

For summer delivery

ALLIUM

Alliums are used primarily for garden purposes. The variety neapolitanum is good for forcing. p. 1000 \$

- ALLIUM ALBOPILOSUM, lilac, very fine.....
- " AZUREUM, azure blue
- " GIGANTEUM, violet red, very large
- " KARATAVIENSE, purple with broad leaves
- " MOLY (LUTEUM), yellow
- " NEAPOLITANUM GRANDIFLORUM, white, good
 for forcing
- " OSTROWSKIANUM, deep carmine rose, dwarf ..
- " ROSENBACHIANUM, purple rose, height 4 feet ..
- " SPHAEROCEPHALUM, „drumsticks“, deep purple,
 excellent cutflower

ANEMONES

Ready September—May

Single and Double Anemones are grown in large quantities for cutflowers. They can be planted in cool houses to get them in bloom earlier. The flowers are very showy and fine for table decoration.

Both kinds and also the various other varieties are splendid in gardens and rockeries. Apennina and Blanda varieties bloom early.

As most varieties are not hardy, they are best planted in spring.

- *SINGLE DE CAEN, grand mixture
- " HOLLANDIA, bright red
- " MR. FOKKER, blue
- " SYLPHIDE, violet
- " THE BRIDE, pure white
- *SEMI DOUBLE ST. BRIGID, splendid mixture
- " " LORD LIEUTENANT, dark blue
- " " THE ADMIRAL, rose violet
- " " THE GOVERNOR, brilliant red
- APENNINA ALBA, white, large flowers
- " BLUE, very early
- BLANDA, blue shades, very early
- " ROSEA, rose shades, very early
- " MIXED, very early
- FULGENS MULTIPETALA, semi double, bright scarlet
- ST. BAVO, grand mixture

BRODIAEA CONGESTA, bright blue

“ **LAXA**, dark blue

Brodiaea are used for gardening purposes. They need a solid covering during the winter.

CAMASSIA CUSIKII, porcelain blue

“ **ESCULENTA**, violet blue

Camassias are fine in the garden, need a good covering in winter.

CHIONODOXA (Glory of the Snow)

Chionodoxa are very attractive little flowers blooming early in spring. Splendid especially when planted in large patches or masses. Can be left in the garden year after year where they multiply freely. Need some slight covering during the winter.

GIGANTEA (ALLEN), light blue, white center

***LUCILIAE**, lilac blue, pale starshaped center

“ **ALBA**, white

“ **ROSEA**, rose

“ **PINK GIANT**, novelty

SARDENSIS, bright blue

COLCHICUMS

Shipment mid July

Colchicums flower in August—September. If left undisturbed in the garden, they become very free flowering. They do best in cool soil which retains moisture.

They will also bloom inside without water or soil. Close to the light, in the window is then the best place for the bulbs. When through blooming, they can be planted in the garden.

AUTUMNALE ALBUM, pure white

“ **MAJOR**, soft violet

“ **MINOR**, violet

LILAC WONDER, lilac violet, large flower

SPECIOSUM, rose

THE GIANT, lilac mauve, white base

VIOLET QUEEN, lilac tinted violet

CORYDALIS (FUMARIA) BULBOSA

Corydalis are used in the garden. Fine amongst shrubs where they are soon established and increase freely.

CYCLAMEN PERSICUM GIGANTEUM

“ **NEAPOLITANUM**

Cyclamen persicum is the well known potplant. The variety Neapolitanum is used in gardens, special in rockeries. They require a shady place.

ERANTHIS (Winter Aconite)

Eranthis flower very early. Splendid for planting in front of shrubs and in rock gardens. They will not thrive in dry ashy soil.

- CILICICA, pale yellow
- *HIEMALIS, golden yellow

- EREMURUS BUNGEI**, canary yellow
- " **HIMALAICUS**, snowwhite
- " **ROBUSTUS**, pale pink
- " **SHELFORD HYBRIDS**

Eremurus are very ornamental in the garden. The Shelford hybrids are also fine for cutflowers. They need good fertile soil and may not bloom the first year after planting. It is advisable to protect the foliage in the Spring against frost damage.

ERYTHRONIUM DENSCANIS (Dog's tooth violets), in varieties

- " " **mixed**

Erythrioniums are fine in the garden and rockeries. Plant them at once on arrival in good soil mixed with peat moss, preferably in a somewhat moist slightly shadowed place. They need slight covering in winter.

FREESIA

Freesias are grown in greenhouses, are ideal cutflowers and very fragrant.

- FREESIA APOTHEOSE, lilac rose, pure white center
- " BLUE PENNANT, lobelia blue with white throat ..
- " BUTTERCUP, yellow
- " CARO CARLEE, creamy white, extra
- " COTE D'AZUR, blue with white throat
- " MARION, violet blue
- " ORANGE SUN, orange yellow
- " PRINCESS MARIJKE, brown orange, outside purple
- " RYNVELD'S GOLDEN YELLOW, golden yellow
- with orange
- " SAPHIR, lilac blue, white throat, long strong stem
- " SNOW QUEEN, white, very large
- " SNOWSTORM, pure white, free-flowering
- " FINE MIXTURE

- FREESIA GRANDIFLORA, rose-red shades
- " " lilac-blue shades
- " " yellow and orange shades
- " " mixed colors

FRITILLARIA

Fritillaria Imperialis are very ornamental in groups in borders, they do not like dry soil. Fritillaria meleagris is fine in rockeries.

- *IMPERIALIS (CROWN IMPERIAL) AURORA, orange red
- " " " LUTEA, yellow
- " " " ORANGE BRILLIANT, orange red
- " " " RUBRA, dark orange red
- " " " RUBRA MAXIMA, dark red
- " " " FINE MIXTURE

p. 1000

- MELEAGRIS (GUINEA HENFLOWER), ALBA, pure white
- " " " NAMED VARIETIES
- * " " " FINEST MIXTURE

GALANTHUS (Snowdrops)

Galanthus are amongst the first flowers blooming in Spring. When planted in borders, amongst shrubs and in grass, they rapidly increase. When mowing the grass the foliage of the Galanthus must not be cut before this has died off. Splendid also in rock gardens.

- ELWESI, very large flowers
- *NIVALIS SINGLE, pure white
- " DOUBLE

- HYACINTHUS AMETHYSTINUS**, amethyst blue
- " " ALBUS, pure white

Hyacinthus amethystinus are of the same habit as Muscari and can be grown outside in the same way.

IRIS SPECIES

- DANFORDIAE, golden yellow, early
- *RETICULATA, fine for forcing, sweet-scented, dark blue
- " CANTAB, light blue
- " HERCULES, dark purple
- " J. S. DIJT, dark blue

Iris Reticulata is splendid for gentle forcing in pots.

- IXIA NAMED VARIETIES OUR CHOICE**
- " " " " " large flowering . .
- " MIXED VARIETIES

These little bulbs are mostly used by the florists for growing cutflowers. Can also be planted in the garden in sunny warm spots. They are not hardy and need a heavy covering in winter.

- IXIOLIRION PALLASI**, blue

Ixiolirion are planted in the fall and can permanently stay in the garden. A sunny spot is preferred and a slight covering during winter.

LILIUM

Lilium Candidum and Lilium Excelsum are the only Lilies which are ready for shipment August—September.

- *CANDIDUM (MADONNA LILY), white

Top size	bulbs
First size	"
Second size	"

- EXCELSUM (TESTACEUM), apricot yellow, fragrant

MUSCARI (Grape Hyacinths)

Very attractive and popular for mass planting and in rockgardens, they are quite hardy. The variety armeniacum and others can well be forced and are also recommended for corsage flowers.

- *ARMENIACUM, bright blue, splendid for forcing, as well as outside
- AZUREUM, azure blue truss
- AZUREUM ALBUM, pure white, very large flower
- BOTRYOIDES ALBUM, white
- " COERULEA, blue
- EARLY GIANT, extra blue
- *PLUMOSUM (FEATHERED HYACINTH), violet

- ORNITHOGALUM NUTANS**, greyish green
- " PYRAMIDALE
- " UMBELLATUM, white, outside green

Hardy bulbs for naturalizing, also good for rockgardens.

- OXALIS ADENOPHYLLA**, lilac rose
- " DEPPEI, deep pink, **reposed bulbs**

Oxalis adenophylla is fine for gardens and borders. The reposed bulbs of Oxalis deppei are special for growing in pots.

- PUSCHKINIA LIBANOTICA**, pretty lavender blue
- " " ALBA, white

Puschkinia is used like Chionodoxa. Fine for mass planting, in borders and rockgardens.

RANUNCULUS

Ready August—May

Ranunculus are mostly used by florists and produce very graceful decorative flowers. Are also fine for garden purposes. Plant in Spring 1"—2" deep and lift them in fall. Must be kept dry during the winter in a cool frostfree place.

- DOUBLE FRENCH in named varieties
- * " " mixed
- " PERSIAN in named varieties
- " " mixed
- " TURBAN in named varieties
- " " mixed
- PEONY FLOWERING in named varieties
- " " superfine mixed varieties

SCILLA

Scilla sibirica is very popular for planting in the garden, for mass planting and in rockgardens. They make a charming effect in early Spring.

The campanulata varieties are fine for naturalizing amongst shrubs, also in borders and rockgardens.

All varieties are hardy.

Scilla sibirica Spring Beauty is also fine for forcing in pots for florists.

- BIFOLIA, deep blue, very early
- CAMPANULATA ALBA MAXIMA, pure white
- " ARNOLD PRINSEN, deep rose long truss
- " BLUE QUEEN, pale blue, early
- " DAINTY MAID, bright deep pink
- " DONAU, dark blue, large, new
- " EXCELSIOR, blue, extra large
- " MYOSOTIS, light blue, large, new
- " PRINCESS JULIANA, light pink, large new
- " RHINELAND, deep blue, large, new
- " ROSE QUEEN pink, short trusses on long stems
- " WHITE TRIUMPHATOR, pure white, large, new
- * " MIXED VARIETIES

SCILLA—continued

- SIBIRICA, sky blue Top size
First size
- " ALBA, white ,
 " SPRING BEAUTY, sky-blue, large Top size
First size

- SPARAXIS in named varieties
- " in mixed colors

Tender bulbs mostly used in greenhouses. They have striking colors. Can also be planted in warm sunny spots in the garden, but are not hardy, thus need a heavy covering in winter.

TRITELEIA UNIFLORA, sweet scented, pale lilac

Triteleias are fine for naturalizing and are quite hardy. Good also for rockeries.

TRITONIA CROCATA ORANGE DELIGHT

Tritonias are tender bulbs and are used in cool greenhouses. They have bright colors.

BULBS and ROOTS

for *Autumn and Spring Delivery*

ACIDANTHERA MURIELAE, splendid bulbous plant from Ethiopia, somewhat on the order of gladioli. Pure white with purplish blue blotches. Sweet scented p. 1000 \$

AMARYLLIS HIPPEASTRUM Ready Sept.—March p. 100 \$

HYBRIDS, in colors

„ mixture

Amaryllis Hybrids are highly recommended especially for pots in the home, can also be supplied prepared for early flowering.

ARUM CORNUTUM, dark purple

Arum cornutum will bloom inside in March in dormant state without soil or water. When through blooming, they can be planted in the garden and must be lifted in the fall and kept frostfree during winter.

Begonia (Tuberous rooted) Not ready before Nov.

Splendid summer flowering bulbs. The double varieties are also used as pot plants, but the principle value of Begonias is for garden purposes for which the double varieties and also the Multiflora kinds are becoming more and more popular.

SINGLE-FLOWERING p. 1000 \$

SINGLE, in the following colors: White, yellow, rose, scarlet, dark red, orange, copper and salmon

SINGLE, mixed colors

CRISPA, in the following colors: red, rose, yellow, white, orange, copper

CRISPA, mixed colors

CRISTATA, mixed colors

BERTINI, dark orange

DOUBLE-FLOWERING

*DOUBLE (Large Camellia Flowering), in the following colors: scarlet, dark red, rose, orange, copper, salmon, yellow, white

DOUBLE (Large Camellia Flowering), Mixed colors

BOUTON DE ROSE, light and dark pink shades

- CAMELLIA FLORA (Type), rose flowers bordered white ..
- FIMBRIATA, in the following colors: red, rose, orange, white, yellow, salmon
- FIMBRIATA, Mixed colors
- MARMORATA, scarlet, striped white
- PENDULA, in the following colors: crimson, scarlet, rose, orange, white, yellow, salmon
- PENDULA, Mixed colors

MULTIFLORA

- AMI JEAN BARD, salmon orange, freeflowering
- FLAMBOYANT, bright red
- GALLE SUPERBA (GHENT JEWEL), salmon-orange
- HELENE HARMS, soft yellow
- MAD. RICHARD GALLE, copper

CALLA

- AETHIOPICA (LILY OF THE NILE), white, fine for pots
- ALBO MACULATA, fine Bulbs, foliage dark green, white spotted
- CHILDSIANA, very broad expanded flowers, beautiful pure white
- ELLIOTTIANA (GOLDEN CALLA FROM THE CAPE), extra large size bulbs
- MRS. ROOSEVELT, sulphur yellow, spotted foliage
- SOLFATARE, light yellow

DAHLIAS

DECORATIVE AND AMERICAN DAHLIAS

- *ADOLF MAYER, dark red, beautiful shape, strong stem
- BRANDARIS, orange with yellow center
- *BROEDER JUSTINUS, salmon orange with yellow center, large flowering
- CAPTAIN CARLSEN, coppery orange
- *DEUIL DU ROI ALBERT, purple with white tips
- *GERRIE HOEK, soft pink, extra for cutting

- GLORY OF HEEMSTEDDE, sulphur yellow, long stems
- *GOLDEN LEADER, clear golden yellow
- HOUSE OF ORANGE, soft orange
- JERSEY BEAUTY, salmon pink
- MAJUBA, carmine red
- PURPERSLAK, dark lilac purple
- *RED AND WHITE, red with white tips
- *SNOWSTORM, pure white
- *TERPO, blood red
- WHITE SUCCESS, pure white
- MIXED COLORS

CACTUS AND SEMI-CACTUS DAHLIAS

- ARISTOCRAT, blood red, good keeper
- *BACCHUS, brilliant red, the best in its class
- *BELLE DAME, deep salmon pink, very free flowering
- BERGER'S MEISTERSTUCK, beautiful rose, nicely shaped
flower
- DORIS DAY, fiery red
- DAYDREAM, salmon rose
- FLIRT, sulphur yellow, very rich flowering
- GENERAL EISENHOWER, beautiful bloodred, elegant large
flower
- *HER GRACE, salmonrose, rather large, long stem
- *HOEK'S GLORY, fine lilac rose
- *HOEK'S YELLOW, sulphur yellow, excellent for cutting
- *MARGARET ROSE, salmon pink, with creamy yellow center,
one of the best varieties
- *ORFEO, deep purple
- *PASTEL, carmine pink, excellent for cutting
- *PIONEER, clear yellow, very strong stem
- *PRIDE OF HOLLAND, deep pink, large flower
- *PURITY, pure white, strong stem, well shaped flowers, extra
for cutting
- PRINCESS ROYAL, soft rose, white center
- *SILVRETTA, salmon overlaid with mauve and silvery shades
- *TORNADO, bright orange, splendid acquisition
- *TOSTO, berry red. Keeps well when cut
- VICTORY DAY, carmine red, large flower, strong stem
- WHITE FAVOURITE, early and free, good for cutting
- MIXED COLORS

POMPON DAHLIAS

p. 1000

\$

- HELOISE, dark purple
- KITTY BROWN, red
- KOCHELSEE, bright red
- LIPOMA, clear pink
- NELLY, lilac
- RED BABY, blood red, well shaped
- STOLZE VON BERLIN, lilac rose
- WHITE ASTER, pure white
- ZONNEGOUD, golden yellow
- *MIXED COLORS

DICLYTRA (DICENTRA) SPECTABILIS

GLADIOLUS

Flowering period:

1 = early, 2 = medium, 3 = late

We believe there is no other class of bulbs in which so many new and beautiful varieties have been developed as in Gladiolus.

The following collection is of outstanding value in which all colors of the rainbow are represented.

No wonder the demand for Gladiolus increases from year to year.

Ideal for cutflowers and growing in almost any soil with little care, they are of great value also for gardening purposes and when planted at intervals from Spring till June, Gladiolus offer the gardener a crop of cutflowers all through the summer until the frost sets in.

WHITE AND CREAMY WHITE

p. 1000

\$

- 1 EARLY WHITE, pure white
- *1 JUNE BELLS, white
- *1 MARIA GORETTI, pure white, very large
- *2 MORNING KISS, white, with rosy haze
- 2 SNOW/PRINCESS, white
- 3 WHITE AUTUMN, ivory white, narrow carmine-red stripe
in the center

YELLOW

- 1 AMERICAN EXPRESS, soft yellow
- 1 GOLD DUST, buttercup yellow
- *2 HAN VAN MEEGEREN, canary yellow
- 1 HOPMAN'S GLORY, sunflower yellow
- *1 MARECHAL NIEL, pale saffron yellow, apricot yellow
towards the edges
- *2 POLYGOON, yellow
- 2 RISING SUN, yellow
- 2 WILLEM HAGEMAN, deep golden yellow

PINK, FLESH AND SALMON SHADES

- *2 ALFRED NOBEL, salmon rose, with white mark
- 1 ALLARD PIERSON, salmon pink
- *3 BLOEMFONTEIN, salmon, yellow blotch
- *2 DR. FLEMING, rosy pink, white markings
- 3 ELAN, pale rosy scarlet, creamy white to the center
- 3 FLOWERDREAM, pale pink-red, carmine in the center,
yellow stripe
- *2 GENERAL EISENHOWER, begonia rose
- 2 HOLLAND'S GLORY, dark salmon rose, yellow markings
- 2 ILE DE FRANCE, salmon flesh, amber yellow blotch and
crimson red stripes
- *2 LEEUWENHORST, pale lilac rose
- *3 NORTHERN QUEEN, salmon, lighter in throat
- 2 PHILIPPO'S MEMORY, pale lilac rose, narrow carmine red
mark on very pale salmon blotch, white stripe
- *3 PICARDY, salmon
- 2 POLYNESIA, pure salmon
- *2 ROSA VAN LIMA, bright pink
- 2 SPIC & SPAN, salmon pink

ORANGE SHADES

- *1 ACCA LAURENTIA, scarlet orange, yellow markings ..
- *1 ARANJUEZ, dull orange, golden yellow center
- 2 BIT O'HEAVEN, coppery orange
- *3 PRINCESS BEATRIX, scarlet orange, purple markings ..

RED SHADES

- 1 AGNITA, scarlet
- 3 ARISTOCRAT, carmine red, crimson purple glow, lighter
to the edge
- 2 ATLANTIC, garnet red, white spotted blotch
- 1 CIRCE, orange red with yellow blotch
- 3 HANNY SCHAFT, fiery red
- *2 JOHANN STRAUSS, pale cochineal red
- *2 JOHAN VAN KONIJNENBURG, orange red
- *2 JO WAGENAAR, deep carmine with velvet glow and
white stripe
- 1 LIMBURGIA, madder lake, carmine in the throat
- *2 MANSOER, bloodred, deep velvet sheen
- *3 MARSHAL MONTGOMERY, bloodred, velvety garnet red
glow
- *3 NEW EUROPE, geranium red

- *2 NEW YORK, deep carmine red
- *2 POPPY DAY, poppy red
- 1 RED FOX, vermilion red
- 3 SANS SOUCI, scarlet, marked creamy white
- 2 TOPSCORE, vermilion red, carmine blotch, large
- *2 WINSTON CHURCHILL, blood red with black sheen

LAVENDER, BLUE AND VIOLET

- 1 ABU HASSAN, deep violet blue
- 1 FIRMAMENT, lobelia blue with steel gray
- *2 LAVENDEL DREAM, pale light lavender
- *2 LILAC TIME, pale lilac rose, darker shaded markings ..
- *2 LUSTIGE WITWE (MERRY WIDOW), violet with creamy mark
- *2 PUCCINI, magenta colored
- *2 RAVEL, bluish violet, reddish brown markings

PURPLE

- 3 ANKARA, purple garnet
- *2 BENJAMIN BRITTEN, magenta
- *3 BOULOGNE, wine color
- 2 CARDINAL DE JONG, violet purple.....
- *2 CARDINAL SPELLMANN, light violet purple
- *3 GRAND MONARCH, antique red, purple blotch, very large
- *2 HARRY HOPKINS, claret, purplish shaded
- *2 HAWAII, mahogany
- 2 LILAC JOY, deep, violet tigered mark
- *2 MABEL VIOLET, pure violet
- *2 MEMORIAL DAY, reddish magenta
- *2 MODERN TIMES, crimson, white lines on lower petals..
- *2 MRS. MARK'S MEMORY, rosy magenta
- *2 PAUL RUBENS, reddish violet, magenta blotches
- 2 UNCLE TOM, dark purple

SMOKY COLORS

- 2 BLUE HAZE, reddish, violet shaded, violet stripe
- *2 SILHOUET, lilac, shaded bright red
- 2 UHU, smoky dark striped

BLACK

- 2 KING OF THE BLACKS, dark purple with black glow ..
- 2 TOBROEK, brownish black with velvet glow

BICOLORS

- *2 ARC DE TRIOMPHE, napel yellow, carmine base
- 1 ARTIST, mauve tigered
- 2 BENARES, soft rose, scarlet to the base
- 2 MASKERADE, amber yellow, scarlet blotch
- 3 MAUREEN GARDNER, soft rose with violet veined flake
- 2 OBERBAYERN, veronica violet, white markings
- *2 PACTOLUS, salmon, bright red flake
- *3 PALETTE, red blotched violet, very striking
- 1 ROMA, rosy white with purplish red blotches
- *2 SPOTLIGHT, canary yellow, carmine blotch.....
- *2 VANGUARD, amber white, red lilac shade

GLADIOLUS PRIMULINUS

A splendid race, getting more popular. They bloom about two weeks before the large flowering type. Very elegant flowers, excellent for cutting.

- HER GRACE, lilac rose
- ORCHID LILAC, cattleya lilac with creamy white blotch ..
- WHITE LADY, pure white
- YELLOW
- *MIXED COLORS

GLOXINIA

Not ready before November

Gloxinias are splendid for pot plants and are grown in greenhouses.

- *BLANCHE DE MERU, light pink, bordered white
- *EMPEROR FREDERICK, red, bordered white
- *EMPEROR WILLIAM, blue, bordered white
- *ETOILE DE FEU, brilliant red
- HOLLYWOOD, purple blue
- *MONT BLANC, pure white
- PRINCE ALBERT, violet blue
- *PRINCESS ELIZABETH, light blue
- *QUEEN WILHELMINA, dark pink
- ROI DES ROUGES, crimson
- *TIGRINA, spotted mixed colors
- *VIOLACEA, blue
- *WATERLOO, dark violet red
- *MIXED VARIETIES, all colors

HYACINTHUS CANDICANS (GALTONIA), white

Hyacinthus candicans are planted in Spring and are fine in groups in borders. They are not hardy, must be lifted in the fall and kept frostfree during winter.

LILIUM

Lilies belong to the most beautiful flowers.

The well known Easter Lily takes a prominent place in the florist trade specially for Easter forcing. Liliium longiflorum in varieties, Croft Lilies and others are largely used for this purpose. As they are not grown in Holland in large quantities, they are not mentioned in our list. There are however some varieties being developed in Holland which are very promising for the future for this purpose.

Of the Varieties mentioned in our list, Regale, Speciosum and the Umbellatum varieties are also good for greenhouse culture. All Lilies mentioned in our list are splendid for gardening, they do excellently in borders, if planted in suitable spots.

The following Lilies are shipped in late fall and during the winter and early spring.

- BURBANKII, orange red, black spotted, tall
- DAURICUM PARDINUM, orange red, yellow center, spotted red
- HANSONII, orange yellow, spotted brown
- *HENRYI, orange yellow, 10 to 20 flowers on a stem
- MAXWILL, bright orange red with small black spots, free flowering
- PARDALINUM GIGANTEUM, bright orange-yellow, black spots
- PHILIPPINENSE FORMOSANUM WHITE SUPERIOR, white, very long trumpet. Good for cool glass house
- *REGALE, white trumpet, outside carmine, one of the most popular varieties for outside and also good for forcing ..
- REGALE ALBUM, pure white
- SPECIOSUM ALBUM, white, outside of petals shaded crimson
- " ROSEUM, white, tinted and spotted rose
- * " RUBRUM, white, tinted pink and heavily spotted red
- *SUTCHUENENSE (WILLMOTTIAE UNICOLOR), orange red
- *TENUIFOLIUM, vivid scarlet
- TENUIFOLIUM GOLDEN GLEAM, gold orange

- *TIGRINUM FLORE PLENO (DOUBLE TIGER LILY), orange, black spots
- „ FORTUNEI, dark orange
- „ SIMPLEX (SINGLE TIGER LILY), orange-red, black spots
- *UMBELLATUM ERECTUM, dark orange-red, height 30 inches
- „ GOLDEN FLEECE, golden yellow shaded apricot
- „ GRANDIFLORUM, orange, brown spots
- „ MONARCH, the best red
- * „ ORANGE TRIUMPH, fine orange, good for forcing and splendid for the garden
- „ SPLENDIDUM, deep red
- WILLMOTTIAE IMPROVED, orange red, spotted brown, height 25 inches

MONTBRETIAS

Montbretias are fine for cutflowers. They thrive best in a somewhat moist, rich soil in places where they are protected against the hot midday sun. They are not hardy everywhere, in extreme cold climates it is advised to lift them in the fall. If left in the ground a heavy covering is required.

p. 1000

\$

- COLLECTION OF NAMED VARIETIES, large flowering
- „ „ „ „ small flowering
- SUPERFINE MIXED

- OXALIS** DEPPEI, pink
 - „ LASIANDRA, carmine, brown tinted foliage
- Oxalis are fine for planting in borders, also good for pots.

p. 100

\$

- PAEONIA SINENSIS (Peonies)** Ready Sept. to March
- IN NAMED VARIETIES, good colors

- RICHARDIA (Callas and Arums)** Ready Nov. to April

White Richardias are used by the florists for growing the popular „Calla Lily“ flowers. The yellow varieties are also used in the garden. Tubers must be lifted in the fall and kept frost free during the winter.

For description of varieties see under Calla, page 42.

SPIRAEAS (Astilbe)

Ready October to April

p. 100

\$

IN NAMED VARIETIES

Spiraeas are mostly used by the florists for growing as potplants. Are also fine in gardens but need lots of moisture, therefor fine along the edge of a pond.

p. 1000

\$

TIGRIDIA (FERRARIA), in varieties

" " fine mixture

Tigridias are planted in early May in a sunny, warm spot in the garden, not too dry. With their glittering colors they make a splendid effect in borders. The flowers which last only one day are produced very freely. Tubers must be lifted in the fall and kept frost free during winter.

TERMS OF SALE

1. Unless specifically otherwise agreed, all products are sold ex seller's warehouse Holland, and travel throughout at buyer's risk and expense.
2. If products are sold ex seller's warehouse, the cost of cases and packing and of phytopathological inspection, and of any freight, forwarding, insurance, export and import charges, shall be for buyer's account.
These charges shall be due and payable on arrival of the goods at United States or Canadian port.
Unless otherwise instructed, the seller will arrange for transportation and for ordinary insurance coverage to destination.
3. Payment shall be due ninety (90) days from date of invoice; two per cent (2 %) discount will be allowed for payment within thirty (30) days from date of invoice.
4. The seller warrants the goods to be sound and healthy at time of shipment but does not otherwise warrant flowering- or other planting-, growing- or forcing results.
5. If at time of shipment, the buyer shall be in default in the payment of any account owing to any member of the Holland Bulb Exporter's Trade Sub-Group (Bedrijfschap voor de Bloembollenhandel) or if the buyer's financial responsibility appears unsatisfactory to the seller, the seller may, at his option, cancel this order in whole or in part, provided that he shall promptly advise the buyer of any such cancellation; and the seller shall not be responsible for any damages whatsoever arising from such cancellation.
6. Total or partial failure of the general or of seller's crop, owing to frost, floods, or other natural causes, or loss or damage to seller's stocks by fire or any other cause beyond his control, preventing seller from fully performing the present and/or similar contracts, shall relieve the seller from his obligations under the present contract to a corresponding extent.
7. Whenever the terms of this order call for delivery f.o.b. any place or conveyance in the United States or Canada, the seller shall be required only to arrange for transportation and insurance to the point specified and the seller may, at his selection, either prepay freight, insurance and/or other shipping charges, including import duty and arrange to collect same on delivery in a lump sum from the buyer, or the buyer shall pay all such charges from warehouses Holland until arrival at such agreed place or conveyance in the United States or Canada. In either case buyer shall be permitted to deduct the charges paid by him to such agreed f.o.b. United States or Canada place or conveyance from the agreed f.o.b. United States or Canada prices.
Notwithstanding any agreement as to delivery at any point other than seller's warehouse, the goods shall in all cases be at buyer's risk from the time they leave the initial point of shipment.
8. All claims hereunder shall be deemed waived unless presented within eight (8) days after receipt of goods. Claims relating to damage to or condition of goods shall be accompanied by Lloyd's survey report or its equivalent, stating full particulars. In case of non arrival of goods at destination within a reasonable time after receiving advice of shipment from Holland, buyer shall notify the seller by wire or cable.
9. Cancellation of orders or part thereof will only be accepted when buyer agrees to pay seller his loss of profit; changes in orders may be allowed only if both parties agree thereto.
10. These printed Terms of Sale cannot be altered nor departed from except by mutual consent in writing.

INDEX

	page		page
Acidanthera	41	Ixia	37
Advertising material	2	Ixiolirion	37
Allium	34	Lilium	38
Amaryllis	41	Lilium	48—49
Anemones	34	Montbretias	49
Arum	41	Muscari (Grape Hyac.) ..	38
Astilbe	50	Narcissus (Daffodils)	25—29
Begonia	41—42	Ornithogalum	38
Brodiaea	35	Oxalis	38
Bulbs for Rockgardens..	33	Oxalis	49
Calla	42	Paeonia	49
Camassia	35	Puschkinia	38
Chionodoxa	35	Ranunculus	39
Colchicums	35	Richardia	49
Corydalis	35	Scilla	39—40
Crocus	30—31	Snowdrops (Galanthus) ..	37
Cyclamen	35	Sparaxis	40
Daffodils (Narcissus)	25—29	Spiraeas	50
Dahlia's	42—44	Terms of Sale	51
Diclytra	44	Tulipa Species	24
Eranthis (Winter Aconite)	36	Tulips Breeder	19
Eremurus	36	" Darwin	13—16
Erythronium	36	" " hybrid ..	16
Freesia	36	" Double early	12
Fritillaria	37	" Double late	23
Galanthus	37	" Lily flowering ..	18
Gladioli	44—47	" Mendel	21
Gloxinia	47	" Parrot	22
Grape Hyacinths	38	" Single early	10
Hyacinths	3—7	" Single late or	
Hyacinths Prepared	8—9	Cottage	17—18
Hyacinthus Amethystinus	37	" Triumph	20—21
Hyacinthus Candicans ..	48	Tigridia	50
Important dates	2	Triteleia	40
Iris	32	Tritonia	40
Iris species	37	Winter Aconite	36



